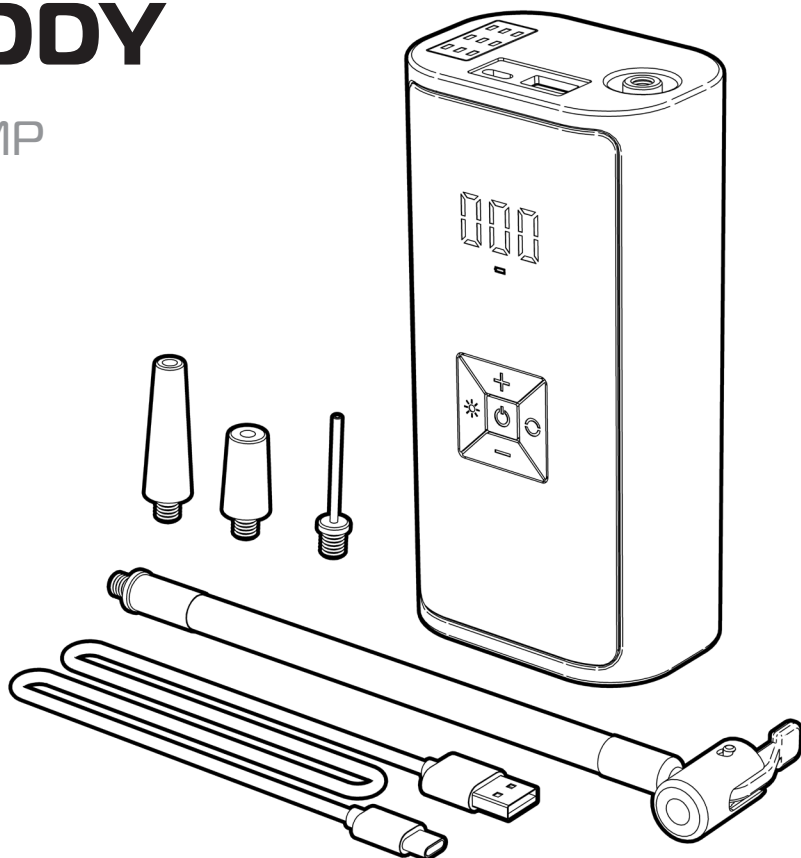


BREAKDOWN BUDDY

SXPUMP

Edition 1



USER MANUAL

Please read and keep these instructions

SCOOTER XTRAS owns the copyright to the Breakdown Buddy user manual. Any information contained in this user manual shall not be photocopied, reproduced or translated into any other languages without the prior written consent of **SCOOTER XTRAS**.

SCOOTER XTRAS strives to provide the highest quality products possible. Products are subject to change without notice.

© Copyright **SCOOTER XTRAS**



SCOOTER XTRAS is part of **FOR-DE Group V Ltd**

INTRODUCTION

Thank you for purchasing this **SCOOTER XTRAS** product.

If you have any issues or questions about the Breakdown Buddy please contact your supplier or **SCOOTER XTRAS** direct:

T: **+61 8 9248 4180**

E: **orders@for-de.com.au**

A: **1 Business Way, Malaga, Western Australia 6090**

INTENDED USE

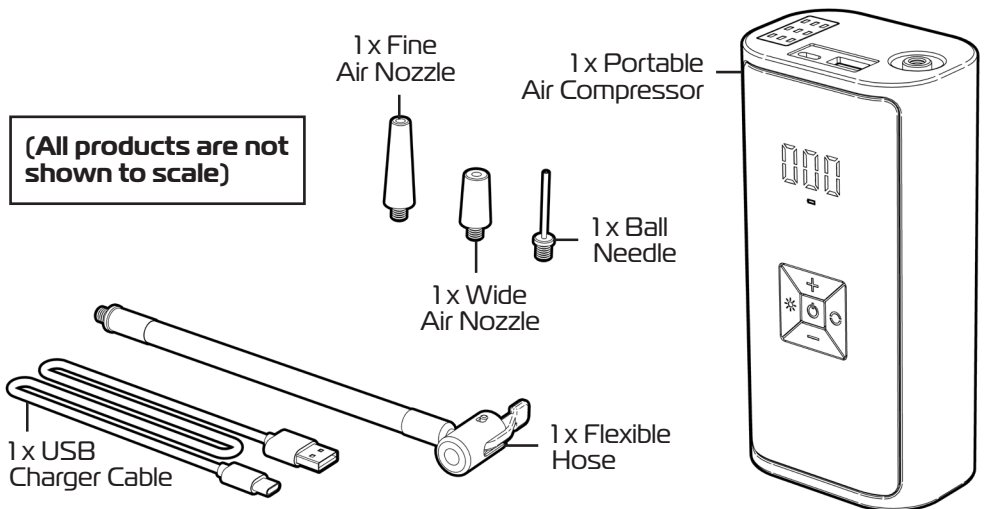
This product has limitations and should be used in accordance to these guidelines. Failure to follow these guidelines may result in damage to the product and injury to the user. It is the responsibility of the user to ensure the suitability of this product for its intended use.

CONTENTS

1. **UNPACK and INSPECT SUPPLIED PARTS**
2. **PRODUCT OVERVIEW**
3. **CABLE CHARGING**
4. **FLEXIBLE HOSE / NOZZLE**
5. **INFLATION SETTINGS**
6. **TORCH / HAZARD LIGHTS**
6. **INSPECTIONS / CLEANING**
7. **SAFETY ADVICE**
8. **WARRANTY**
9. **NOTES**

UNPACK and INSPECT SUPPLIED PARTS

Ensure you have been supplied with the following parts:



1.

PRODUCT OVERVIEW

FEATURES

- 4 in 1 portable device
- Perfect for inflating tyres on mobility scooters, cars, bikes and sporting equipment
- Use as a power pack to charge your electronic devices
- Handy torch to illuminate your surroundings at night for better visibility
- Two hazard lights settings to alert others when there is an issue

SPECIFICATIONS

- Overall: **80mm (W) x 57mm (D) x 160mm (H)**
- Flexible Hose: **200mm (L)**
- USB Charger Cable: **530mm (L)**
- Battery Voltage: **DC 7.4V / DC12V**
- Max Current: **7 Amp**
- Battery Charge Time: **5-7 hours**
- Battery No Load Discharge Time: **>15 min**
- Unit Conversion: **1 BAR / 14.5 PSI / 0.1 MPA / 101 KPA**
- Product Weight: **0.5kg**

Please contact SCOOTER XTRAS if you would like any further information on the product.

IMPORTANT NOTE:

If you see any damage or suspect a fault **DO NOT USE THE PRODUCT** and contact your supplier for support

CABLE CHARGING

Please charge the Breakdown Buddy before using.

The product comes with a USB-A and USB-C charger cord that can be used to charge the device through a suitable USB device.

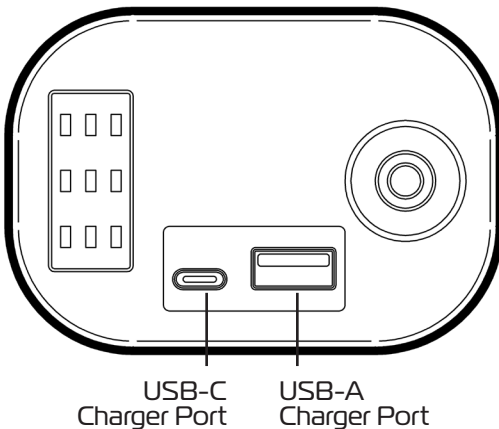
The product also acts as a power pack that is capable of charging any mobile device with a USB-A and USB-C charger port.

IMPORTANT NOTE:

DO NOT use other charging cables to charge the product. If you use any other charging cables, it may cause damage to the device.

Please follow these guidelines to get the optimal benefit from the Breakdown Buddy charging capabilities.

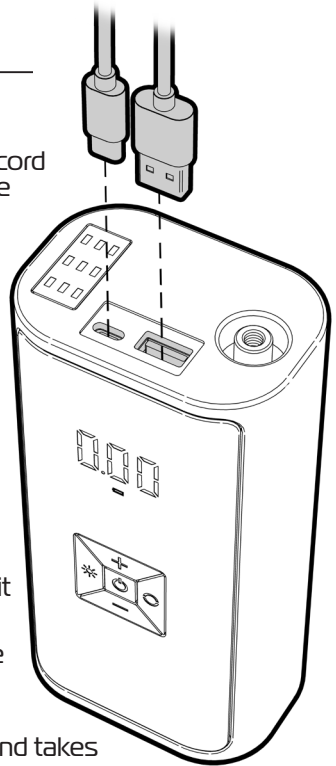
- When the battery display is flashing red, it means the device is low on battery so charge the device immediately using the supplied USB charger cable.
- The USB charging cable greatly protects battery life and takes roughly 5-8 hours for a full recharge.
- When not in use, turn the air compressor on once a month and charge to maintain the longevity of the product. The air compressor has a built in lithium battery that needs to be charged once a month to stay in good condition.



- If there is no reaction when the product is connected to the external power supply, check if any visible faults or damage has occurred.
- The product has an anti-miscontact function. When the inflation pressure reaches 0; the product automatically stops working.

IMPORTANT NOTE:

The product is small in size which may generate excess heat when in use. Caution is advised.



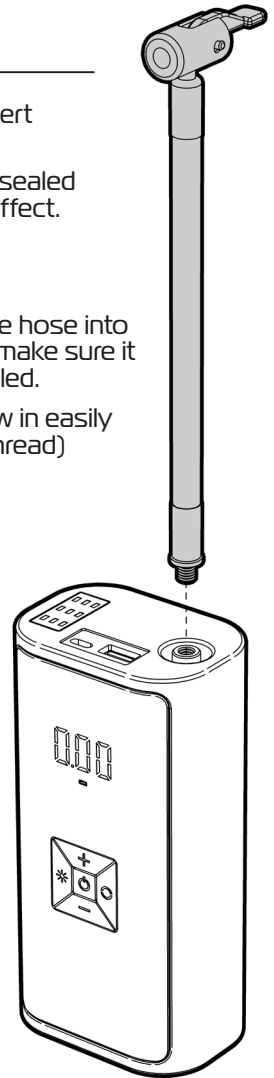
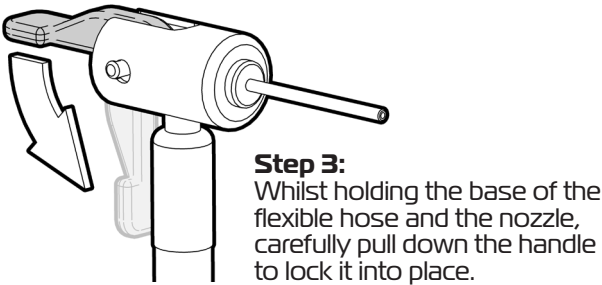
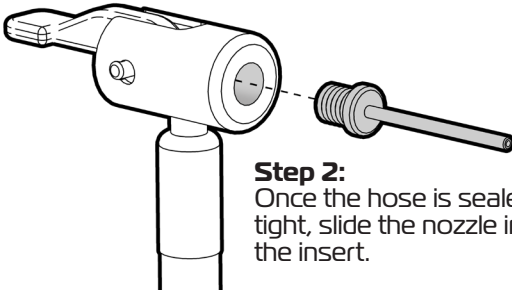
FLEXIBLE HOSE / NOZZLE

After power is turned on, connect the flexible hose to the insert located at the top of the product and tighten it.

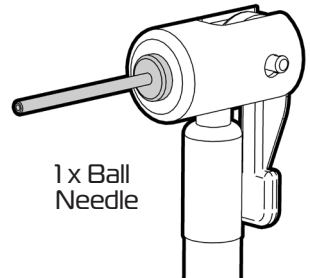
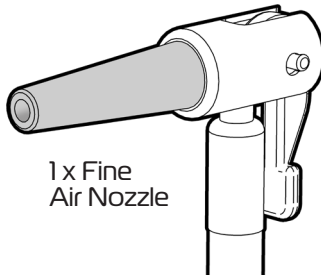
This will secure the hose in place and make sure the hose is sealed tight otherwise the product may not operate to the desired effect.

Please follow these instructions to properly insert the air nozzle

Step 1:
Screw in flexible hose into the insert and make sure it is securely sealed.
(It should screw in easily do not cross thread)



Product comes with 3 nozzles:



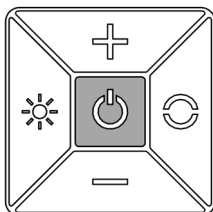
4.

ASK FOR THE BRAND

scooterextras.com

INFLATION SETTINGS

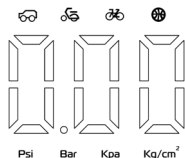
Please follow these instructions to properly operate the device's inflation settings.



Press the power button for 2 seconds to turn on device.

The compressor will go into hibernation mode after 2 minutes of non-use / standby.

The inflation settings can be preset to the required value of the product that is being inflated and will automatically stop inflating once the product reached the preset value.



Psi Bar Kpa Kg/cm²

Press the settings button to scroll through the different inflation setting options and pick which setting that is most suitable:



Cars



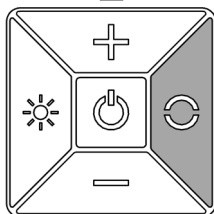
Motorcycles



Bikes



Sporting Equipment



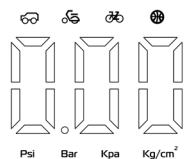
Once inflation setting is selected, hold down the settings button for 2 seconds to scroll through the different inflation pressures:

Psi

Bar

Kpa

Kg/cm²

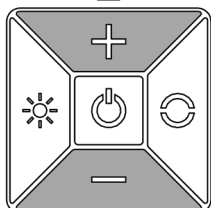


Psi Bar Kpa Kg/cm²

Once the required inflation setting is selected, press the + and - button to increase or decrease the inflation pressure to suit.

Then once the correct pressure is determined, press the power button to start inflating the product.

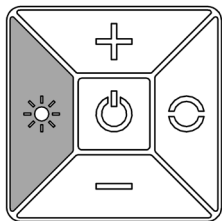
Once tyre is inflated, remove air nozzle first then remove the flexible hose.



IMPORTANT NOTE:

Inflation pressure varies on which mode and setting is selected.

TORCH / HAZARD LIGHTS



The Breakdown Buddy can also act as a torch that can help illuminate your surroundings when visibility is low and has two hazard light settings that can be used to alert others when in need.

The first hazard light flickers a red light slowly when there is minimal danger while the second hazard light flickers a red light quicker when there is a bigger danger and you need to alert someone quickly.

Press the light button to switch between the torch and the hazard light settings.

INSPECTIONS

Visually and physically look over the Breakdown Buddy for signs of damage or wear prior and during use. Inspect the entire product and pay close attention to the following areas:

LCD Display / Flexible Hose / Air Nozzles / Torch / Hazard Lights / Buttons

Check to ensure that all parts work as required.

IMPORTANT NOTE:

If you suspect damage or any fault **DO NOT USE** the product and contact your supplier for service support.

CLEANING

Clean the Breakdown Buddy on a regular basis.

Only use a soft damp cloth and an non-abrasive cleaning solution or mild detergent to clean the product.

Abrasive cleaners or cleaning pads could damage the product and should not be used.

Towel dry any wet areas after cleaning and ensure the product is completely dry before use.

IMPORTANT NOTE:

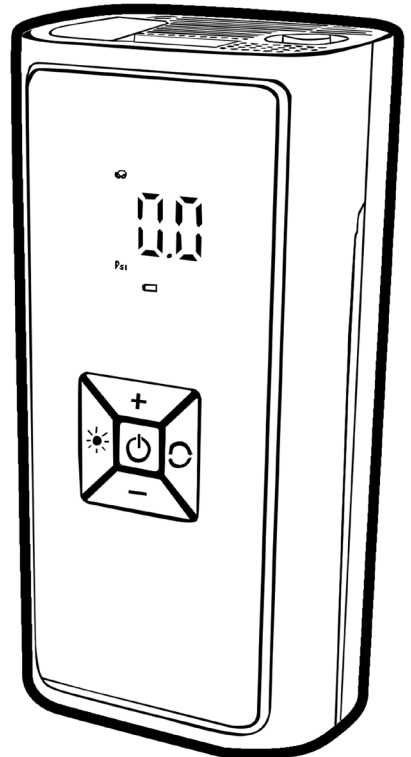
You must take extreme care when cleaning the electrical product as water or fluid of any kind can cause severe damage.

6.

SAFETY ADVICE

For your own safety please read the user manual to get the optimal benefit from the Breakdown Buddy. Failure to follow these guidelines may result in damage to the product and put the user at risk. If any doubt, contact your supplier directly for advice.

- **DO NOT** touch the flexible hose while in operation as the device can reach very high temperatures.
- When product is used for 8-10 minutes extensively please allow it to cool for up to 10-15 minutes to extend the life of the product.
- Keep away from extreme conditions such as high temperatures, low temperatures, humidity, flammables, flammable gas and explosives in order to prevent water or dust from entering the product and cause damage to the electric components.
- Do not get the product wet, it can cause severe damage to it as it is an electrical device.
- Please do not use any other USB charging cable to charge the product as it can cause severe damage to it.
- Make sure to charge the product prior to every use and at least once a month if not used for a long time since the product has a built-in lithium battery and needs to be charged regularly to keep the battery in good condition.
- The product has an anti-miscontact function. When the inflation pressure reaches 0; the product automatically stops working.
- When the battery is off / in standby mode - it can be still be used as an external power supply.
- Do not leave product unattended while in use.



IMPORTANT NOTE:

DO NOT discard the product. Recycle at an appropriate electric recycling point.

WARRANTY

Breakdown Buddy (SXPUMP) is covered by a 12 Month Warranty from the date of purchase.

The Warranty Terms & Conditions noted below provides the product with excellent coverage against possible defective parts or possible faulty workmanship.

Note: Warranty is not transferable.

Scooter Xtras will repair or replace, at our option free of charge any part found on examination by Scooter Xtras to be defective in material and or workmanship within the warranty period. All parts claimed under warranty must be returned to Scooter Xtras in their present condition.

Only an authorized "Warranty Dealer" of Scooter Xtras can undertake warranty work.

During the guarantee period, if the company is satisfied there is a genuine fault, we will repair or replace the product at our earliest convenience.

In order for this guarantee to be valid you must:

- Be the original purchaser.
- Provide a copy of the original invoice / receipt.
- Comply with manufacturer care and maintenance instructions.

If the product has any manufacturing faults during this period contact the place of purchase for assessment. Failures as a result of ACCIDENTAL MISUSE, MODIFICATION OR WEAR AND TEAR ARE NOT COVERED BY THIS WARRANTY.

Our goods come with guarantees that cannot be excluded under the Australian Consumer Law. You are entitled to a replacement part for a major failure and for compensation for any other reasonably foreseeable loss or damage. You are entitled to have the goods repaired or replaced if the goods fail to be of acceptable quality and failure does not amount to major failure.

Do not modify the product in any way or use accessories that are not specified as an option for the product. To do so will void your warranty and may seriously compromise your safety.

If you have any issues or questions about the Breakdown Buddy warranty please contact your supplier or Scooter Xtras direct.

DISTRIBUTOR:



**Proudly
Australian Owned
and Operated**

ASK FOR THE BRAND

scooterxtras.com